



THE POLYCARBONATE
— STORE —



EVOLUTION CANOPY SYSTEM

INSTALLATION GUIDE

All the information in this Installation advice guide is provided for guidance only and is given in good faith, but without warranty or guarantee of any kind, whether implied or expressed.

It must be understood that The Polycarbonate Store has no control over how the information in this document is perceived and interpreted and therefore cannot be held responsible for any resulting fabrication or product failure, howsoever caused.

Statutory regulations regarding health and safety of operative's personnel should be strictly adhered to. The Polycarbonate Store cannot be held responsible for any failure to comply with them. This statement does not affect your statutory rights.

The Polycarbonate Store policy is to continually improve products, therefore methods, materials and changes of specification may be made from time to time without prior notice.

This guide is given in good faith and changes may be made without prior notice

Tools Required:

Power Drill/Driver, HSS Drill Bits - 3mm/7mm/8mm, Masonry Drill Bits - 6mm/8mm, Silicone Gun, Spirit Level, Mallet & Hammer, Step Ladders

Items Supplied:

Star Drive Bit, Posi Drive Bit, Silicone Sealant, Fixings, GutterGrid

Prior to Installation, please ensure the following conditions have been met:

The host wall and base should be made of a sound construction, suitable for fixing this system into position.

Base for canopy posts should be of a solid concrete construction
Fixings provided must be checked for suitability to your application before proceeding with installation.

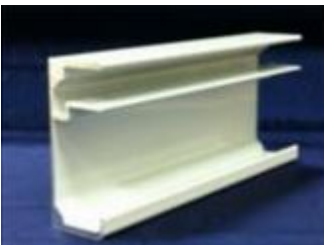
We recommend the canopy is installed by two people due to the size and weight of certain components.

Canopy Components:

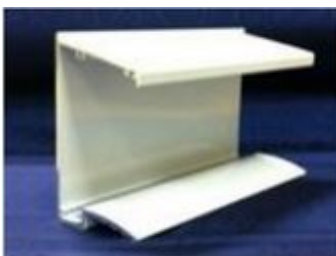
Glazing Bar



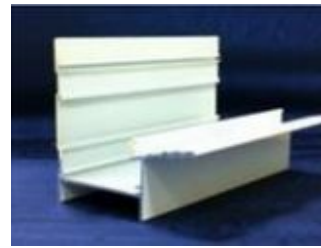
End Bar



Wall Plate



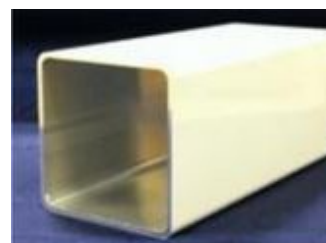
Eaves Beam/Gutter



Sheet End Trim



Canopy Post (Leg)



Eaves Beam/Gutter preparation

Step 1.0

Apply a bead of silicone sealant to the edge of the eaves/beam gutter.



Step 1.1

Fix the end cap to the end of the eaves/beam gutter using the self tapping screws and cover cap provided. Wipe off excess silicone from outside edge. NB do not fit screw "X" as this is fitted later.



Step 1.2

Once the end caps are fitted, apply another bead of silicone to the inside edge



Step 1.3

Determine and mark the position of the post legs on the underside of the eaves/beam gutter. Select the drainage post/s and drill a central 40mm hole. NB. Alternatively a series of small holes can be drilled in a circular pattern to achieve the same result.



Step 1.4

To ensure leaves and debris do not block the water outlet, install a small section of gutter grid as per diagram. This can be fixed into position using a small bead of silicone if required.



Eaves Beam/Gutter preparation

Step 1.5

Eaves Beam/Gutter preparation

Once the pilot hole has been drilled permanently fix post/s into position using two self tapping screws per side. Ensure legs are square to eaves beam before screws are fitted.



Wall Plate Preparation

Step 2.0

Determine the pitch required using the table provided on page 5, then measure and mark the host wall at the correct height.

Step 2.1

Using a 7mm HSS drill bit pre-drill the wall plate 100mm from the edge. Equally space the remaining fixing points along the wall plate and drill. We recommend minimum one fixing per glazing bar along the wall plate.



Step 2.2

Apply a bead of silicone to the back of the wall plate. Offer up the wall plate to the wall and drill and fix the first hole into the wall using the 6mm masonry bit and fixings provided.

**NB fixings supplied are to be fixed into the brickwork withno plug.
Do not fix into mortar joint.**



Wall Plate Preparation

Step 2.3

Ensure the wall plate is level and fit remaining fixings and cover caps. Apply a bead of silicone to the top edge of the wall plate to form a watertight seal.



Erecting The Canopy

Step 3.0

The two edge bar profiles are to be fixed onto the wall plate and eaves beam using the self tapping screws provided. Use one screw at either end of the bar at this point to allow movement for squaring up later in the procedure.



Step 3.1

The drill guide lines on the underside of the wall plate and eaves beam denote the degree of pitch, reading from the host wall from 5 through to 20 degrees. (5 degree wall plate fixing shown opposite).



The correct selection of angle is vital to the installation.

Step 3.2

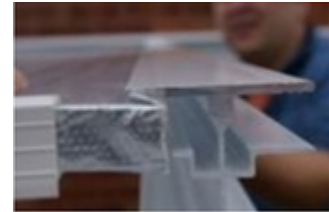
Fit the pvc sheet end closure centrally to both ends of the polycarbonate panels. **NB the printed film on the panels denotes the top sun (outer) side. The perforated foil tape should be at the gutter end of the roof. Closure fitted with drain holes to the underside.**



Erecting The Canopy

Step 3.3

Engage the edge of the first polycarbonate panel into the edge bar and push the panel in firmly leaving a 5mm gap for poly expansion. Then select a glazing bar and continue across the roof, again leaving a 5mm expansion gap. Ensure the bar is then fully engaged into the wall plate.



NB do not secure any of the glazing bars at this point.

Step 3.4

Repeat the bar fitting procedure with all the remaining panels and glazing bars until one panel remains. Now remove the edge bar to allow access of the last panel and then refit. Structure now needs to be squared up. PVC end closures should be flush to wall plate. Now secure all glazing bars using two screws at both ends of each bar.



Fixing Posts

Step 4.0

Once the structure is square, level the posts in both directions using a spirit level. Drill the concrete pad using an 8mm masonry bit and fix post brackets to the concrete base using the stud anchors supplied.



Fixing Posts

Step 4.1

Hammer in fixings and tighten with a 13mm spanner. Check fixings are secure for your base.



Step 4.2

Level the gutter by adjusting the post over the foot bracket. Once the desired position is achieved, secure using two screws & caps either side of the post.



Fitting Sheet Edge Trim

Step 5.0

Apply a bead of silicone to the leading edge of the pvc sheet end closure at the gutter end of the canopy to ensure it is sealed onto the glazing material.



Step 5.1

Position the sheet edge trim profile on top of the glazing bar ends leaving a 10mm gap for water drainage at the end of the sheet. The trim should be fixed down by using screw and caps provided and a bead of silicone applied where the cap sits on top of the bars. A small amount of sealant on top of each screw head is also recommended.



Fitting Sheet Edge Trim

Step 5.2

Using the screws and caps supplied. Use the sight line on the glazing bars to determine drill position. Use one screw per end bar and two per glazing bar.



Step 5.3

Apply a bead of silicone in front of the edge trim over the glazing bar. Fix screw "X" into position (see step 1.1) and fit wall plate end caps.

This now completes the installation of the canopy.



| PITCH | PROJECTION | 1500MM | 2000MM | 2500MM | 3000MM | 3500MM | 4000MM |
|-------|------------|--------|--------|--------|--------|--------|--------|
| 5 | | 2417MM | 2460MM | 2504MM | 2547MM | 2591MM | 2634MM |
| 10 | | 2543MM | 2630MM | 2717MM | 2804MM | 2890MM | 2977MM |
| 15 | | 2665MM | 2795MM | 2924MM | 3054MM | 3183MM | 3312MM |
| 20 | | 2784MM | 2955MM | 3126MM | 3297MM | 3468MM | 3639MM |

Based upon standard 2.25m post lengths and including 20mm for foot brackets. Add 750mm for the 3m post upgrade where applicable.



The Polycarbonate Store
Unit A, Lombard House
Belvoir Road
Coalville
Le67 3PN

Tel: 0116 3090 123
Email: sales@thepolycarbonatetestore.co.uk
Website: www.thepolycarbonatetestore.co.uk